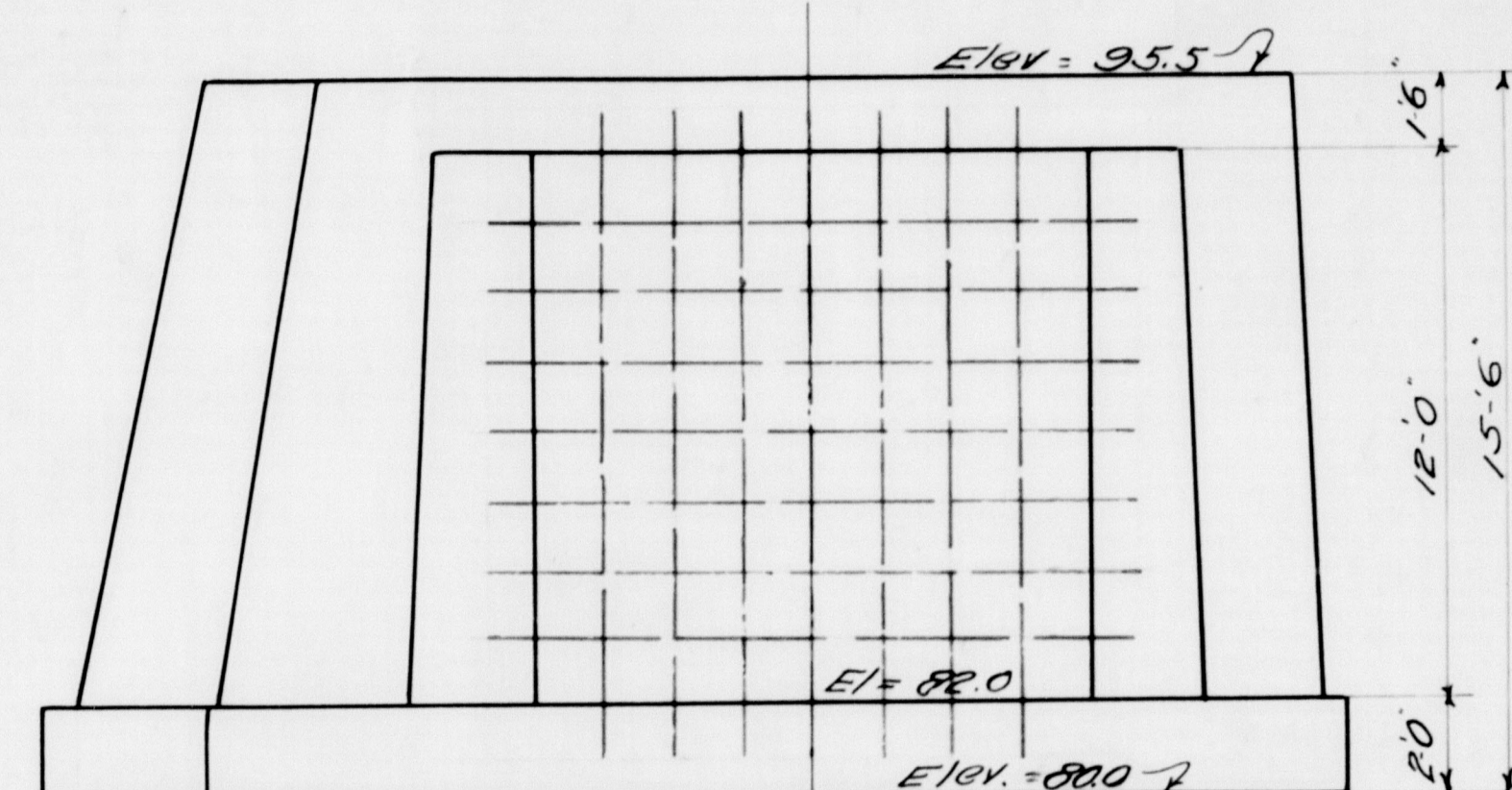
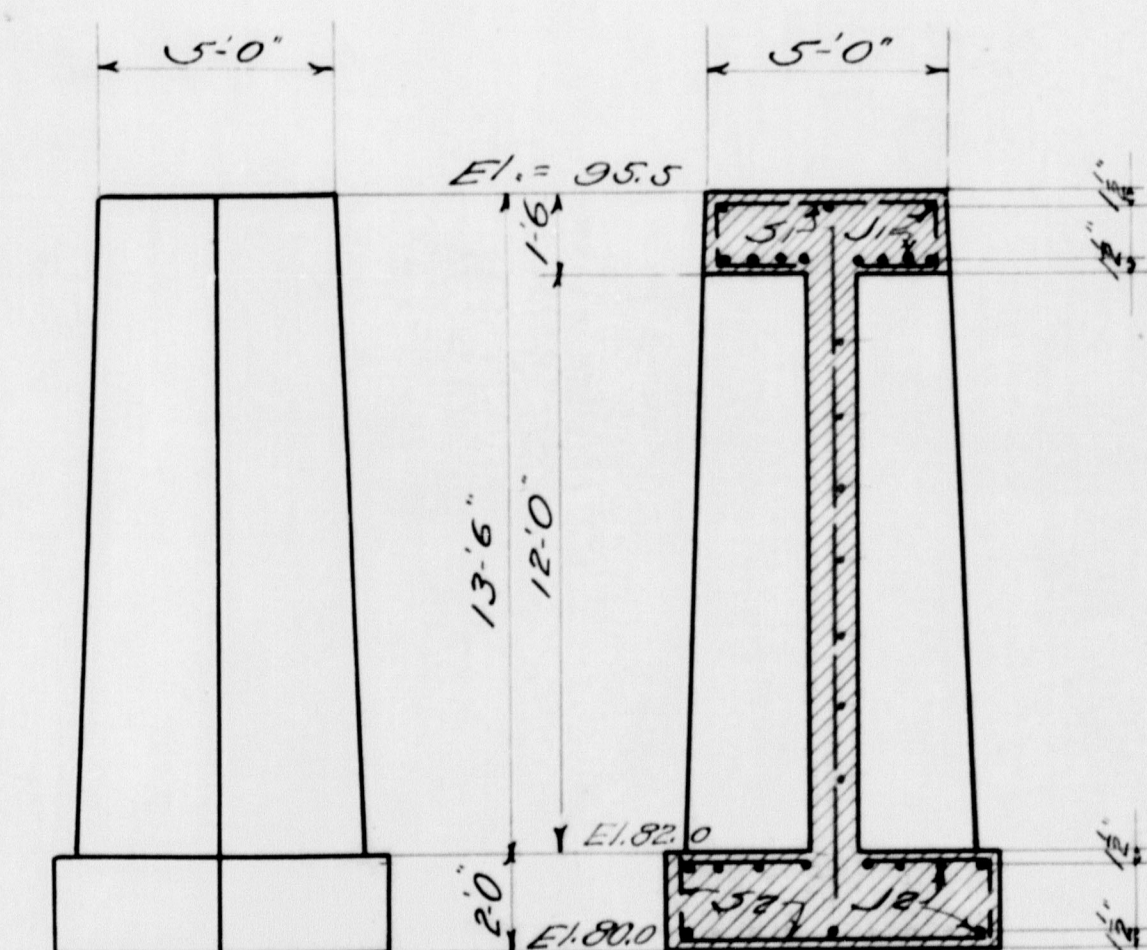


PLAN

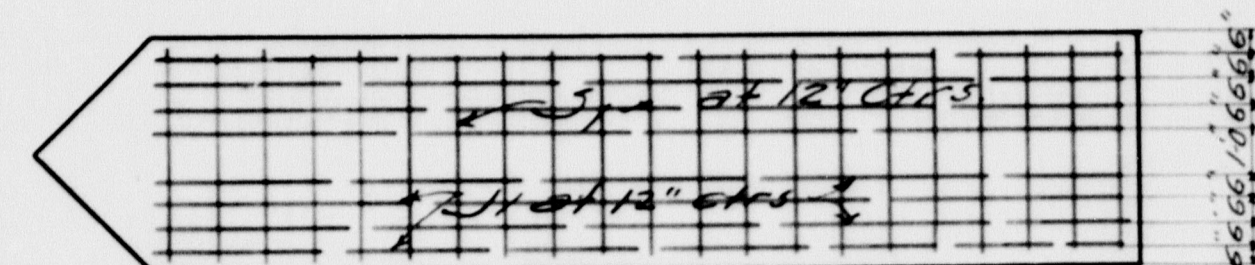


SIDE ELEVATION

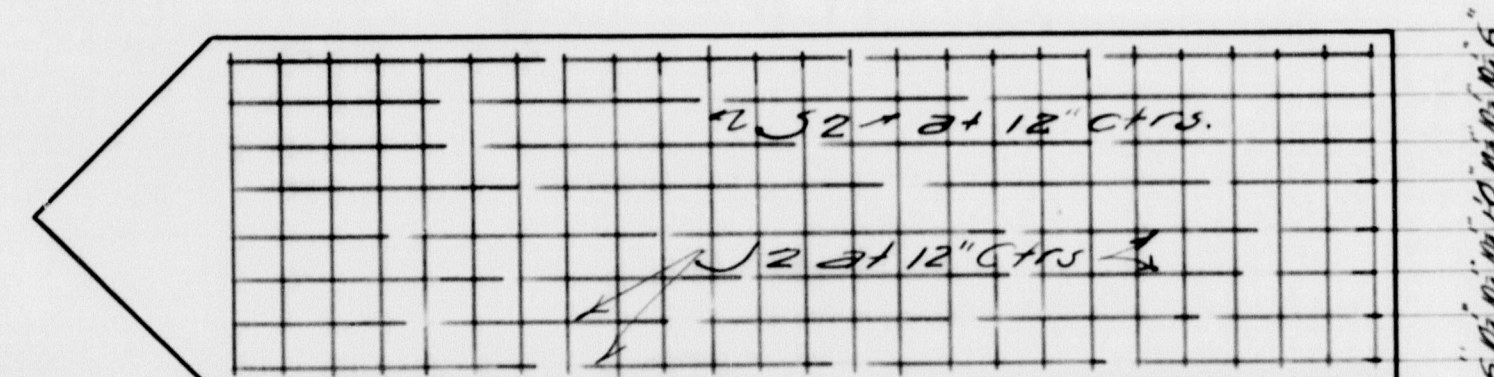


END ELEVATION

SECTION



UPPER SLAB



LOWER SLAB

Mark	Size	No.	Req.	A	B	C	Length	Loc.
S1	3/4"	21		4'-9"	13'	0"	11'-3"	TOP SL
S2	"	25		6'-10 1/2"	19'	3-0"	16'-4 1/2"	BOA -
STRAIGHT BARS								
Mark	Size	No.	Req.	Length	Location			
J16	3/8"	11		21'-0"	TOP SLAB			
J17	"	11		25'-0"	Bottom "			
J18	"	14		12'-0"	Curtain wall			

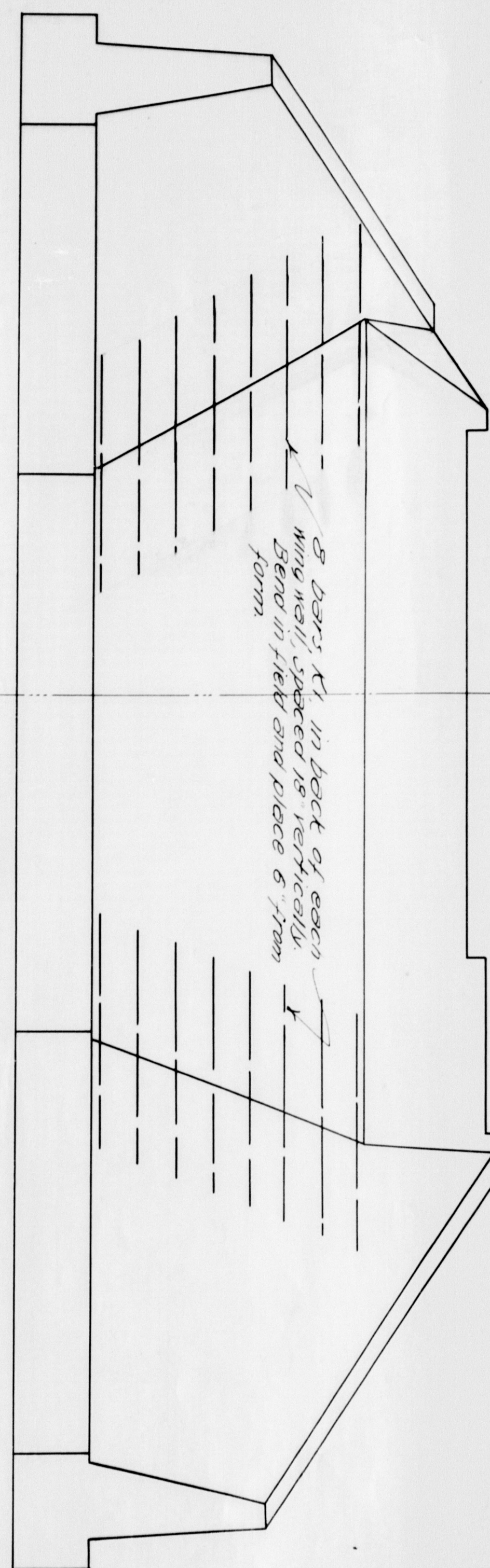
STEEL

Note: Chamfer nose of pier 2"  
All other exposed edges of  
concrete to be chamfered 1"

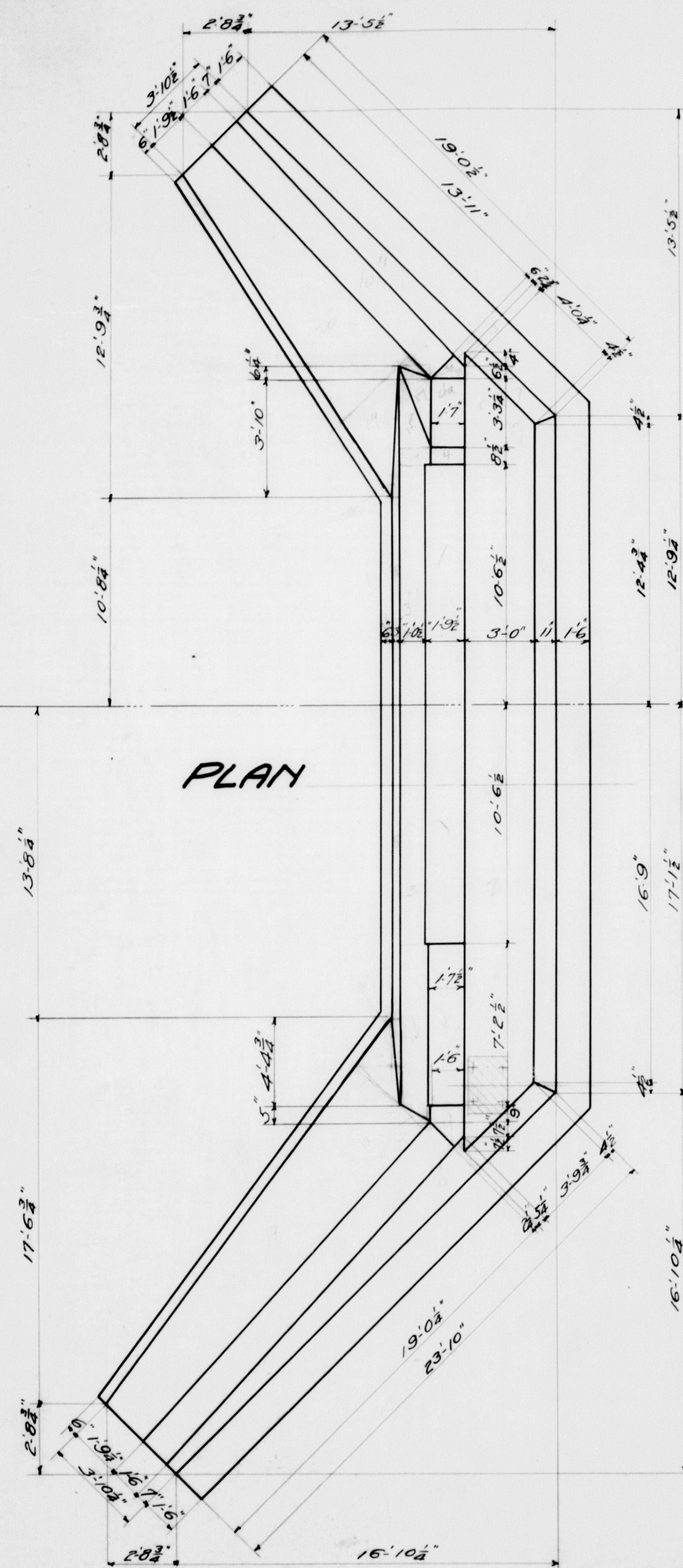
MAINE HIGHWAY COMMISSION  
BRIDGE DIVISION  
**MASARDIS BRIDGE**  
OVER  
**ST. CROIX RIVER**  
IN THE TOWN OF  
**MASARDIS, AROOSTOOK CO.**  
PIER PLAN Sept 14, 1922



REAR ELEVATION



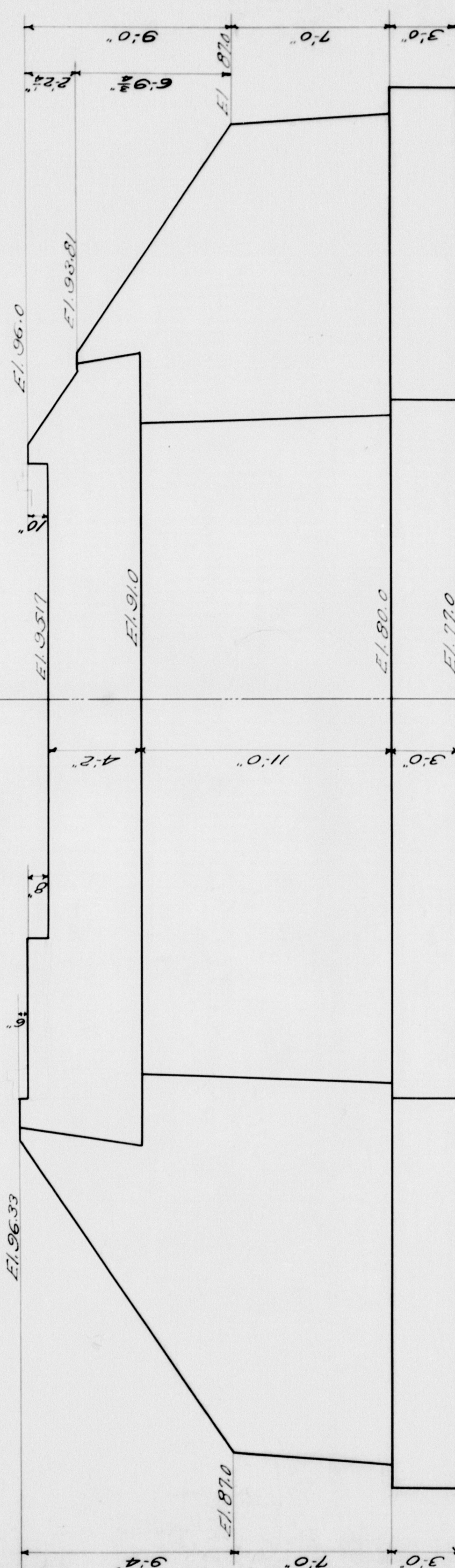
DOWNSTREAM SIDE



PLAN

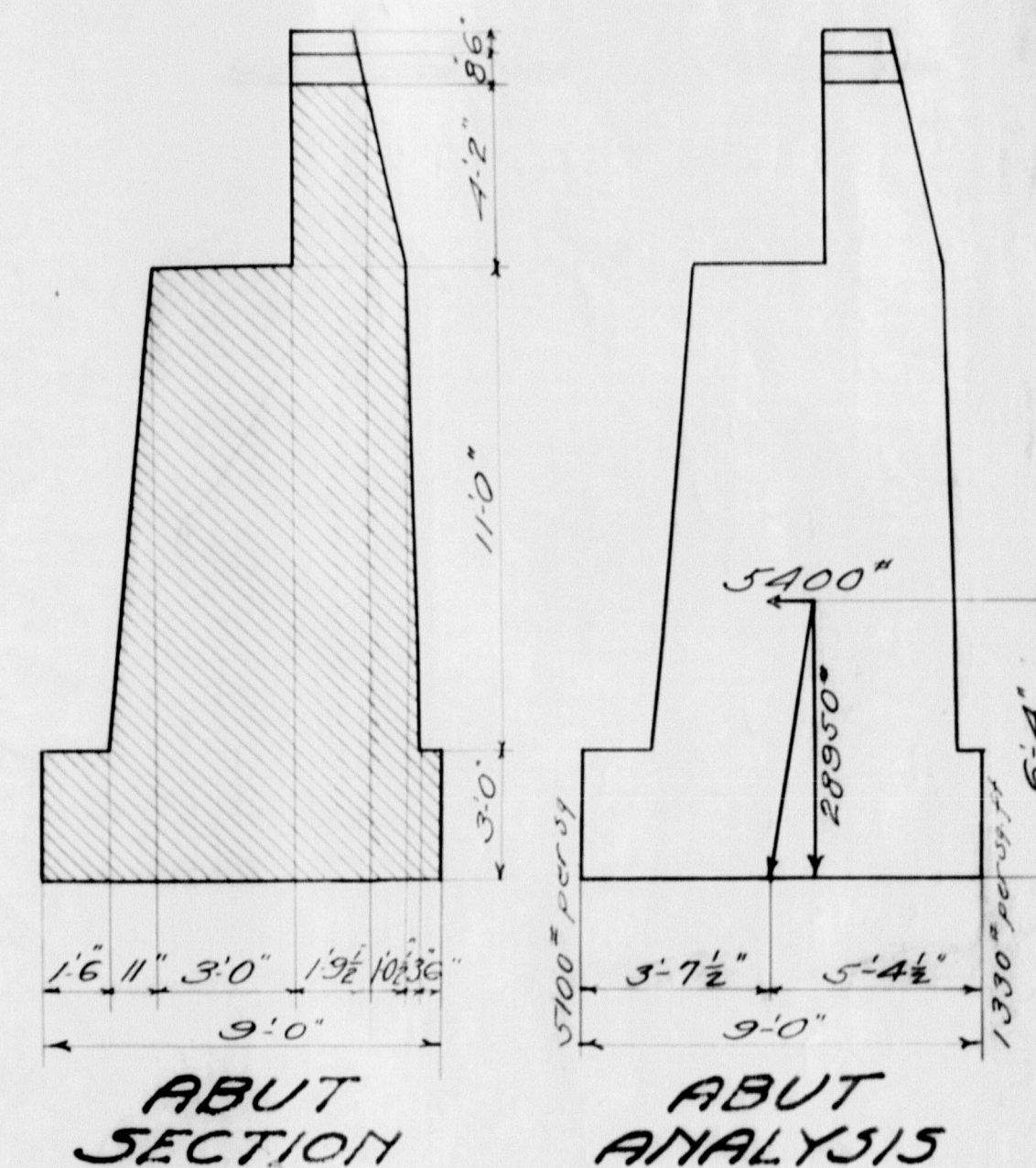
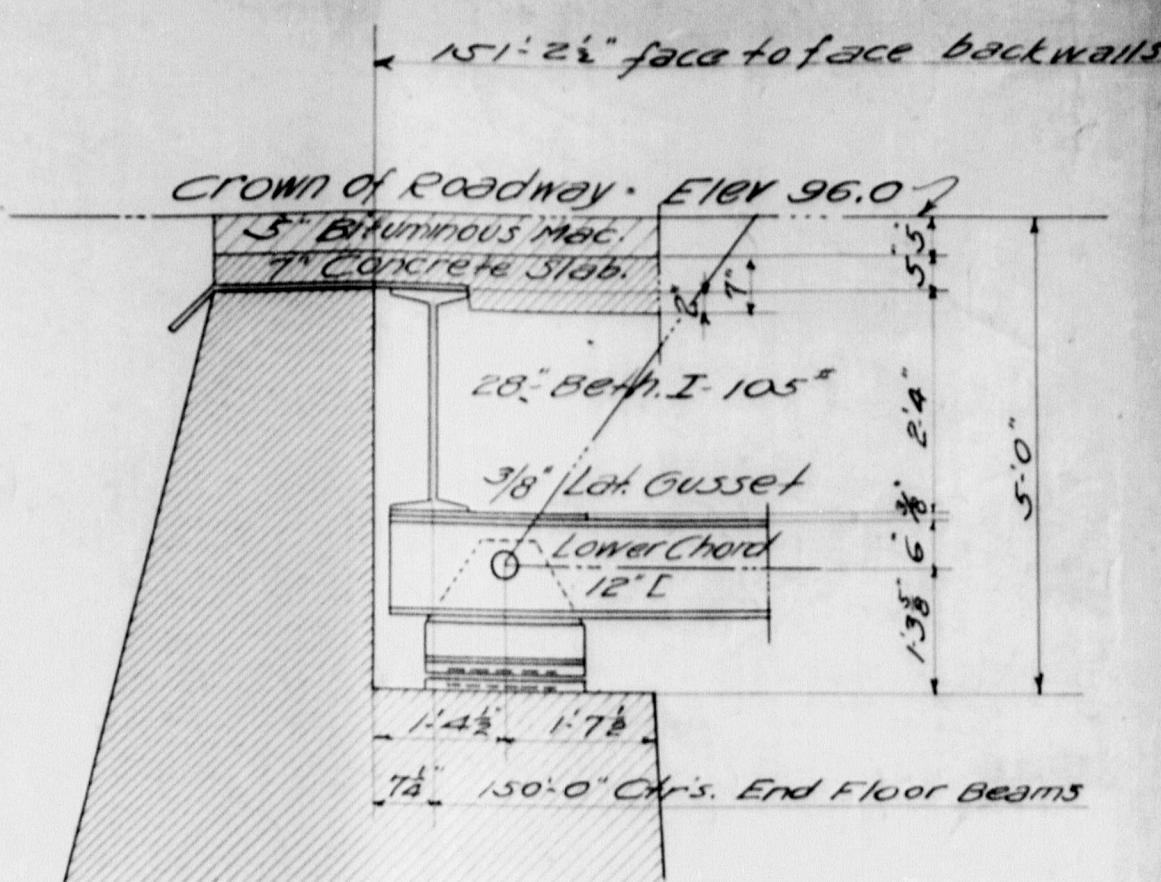
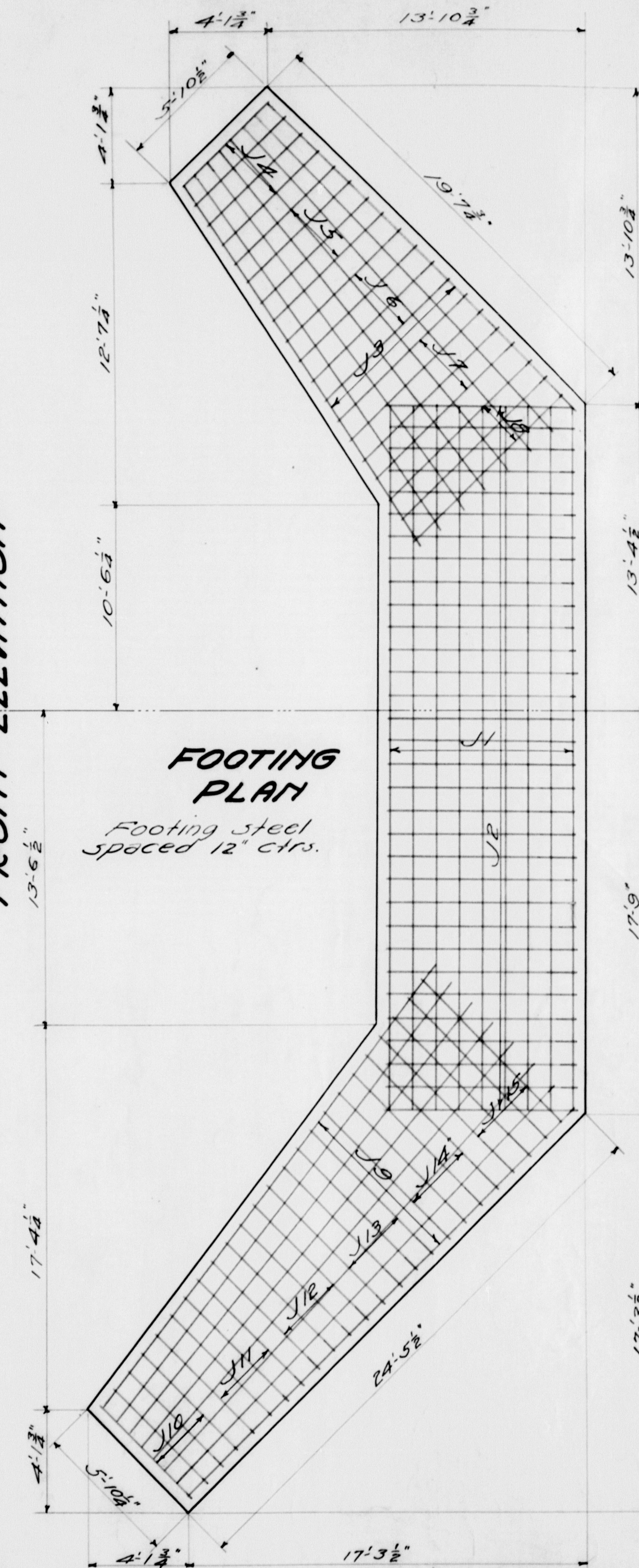
UPSTREAM SIDE

Note: Abutments symmetrical about C of stream.



FRONT ELEVATION

FOOTING PLAN  
Footing steel spaced 12" cirs.



Mark	Size	No. Req.	Length	Location
K1	3/4"	32	10' 0"	Soil of Wing
J1	"	18	3' 0"	Abut.
J2	"	64	8' 9"	"
J3	"	16	19' 6"	Downstr. wing
J4	"	8	5' 8"	"
J5	"	8	6' 5"	"
J6	"	8	7' 1"	"
J7	"	8	7' 9"	"
J8	"	8	8' 5"	"
J9	"	16	24' 6"	Upstr. Wing
J10	"	8	5' 8"	"
J11	"	8	6' 5"	"
J12	"	8	7' 1"	"
J13	"	8	7' 9"	"
J14	"	8	8' 5"	"
J15	"	8	9' 1"	"

STEEL FOR 2 ABUTMENTS

MAINE HIGHWAY COMMISSION  
BRIDGE DIVISION  
MASARDIS BRIDGE  
OVER  
ST. CROIX RIVER  
IN THE TOWN OF  
MASARDIS, AROOSTOOK CO.  
ABUTMENT PLAN Sept 11, 1922